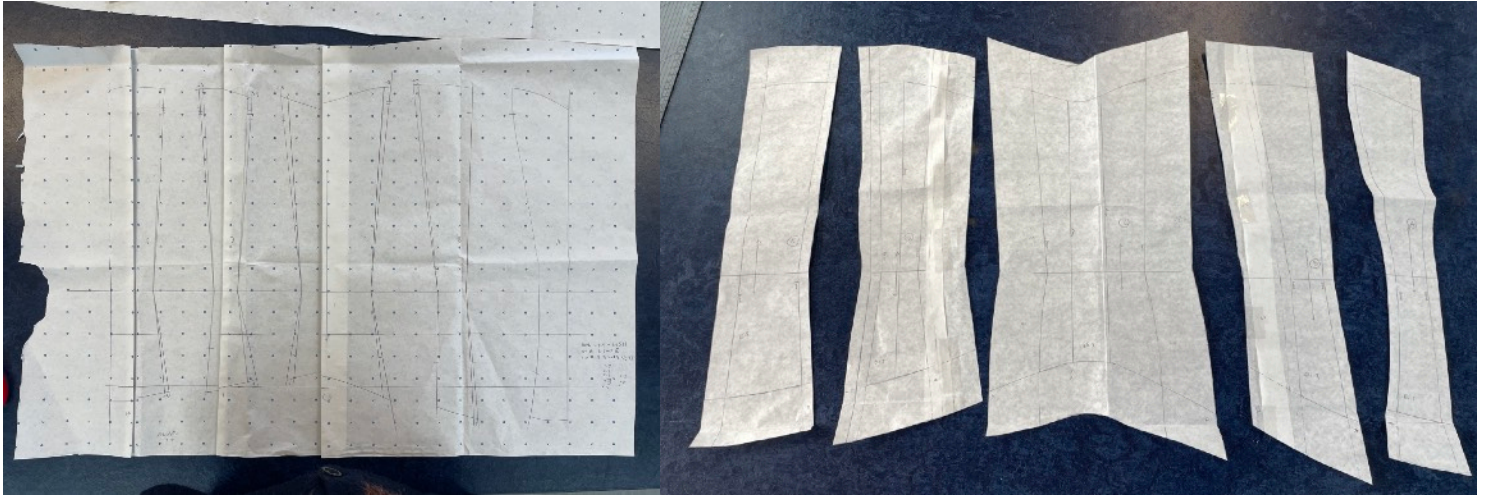
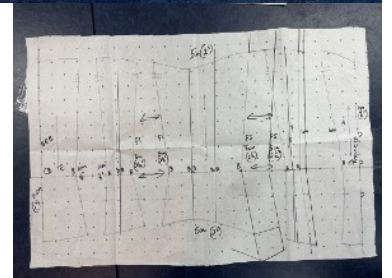


# Corsetry Technical File LCF - Elisabeth Tai

## Step One : Edit Pattern



1. Measurements: Take measurements of the bust, waist, hip (10 cm under)
2. Take it in from the top middle and bottom: Fold the paper from roughly the middle
3. Adjust side seams to equal length.
4. Retrace pattern and add seam allowance.
5. Cut out the final pattern.

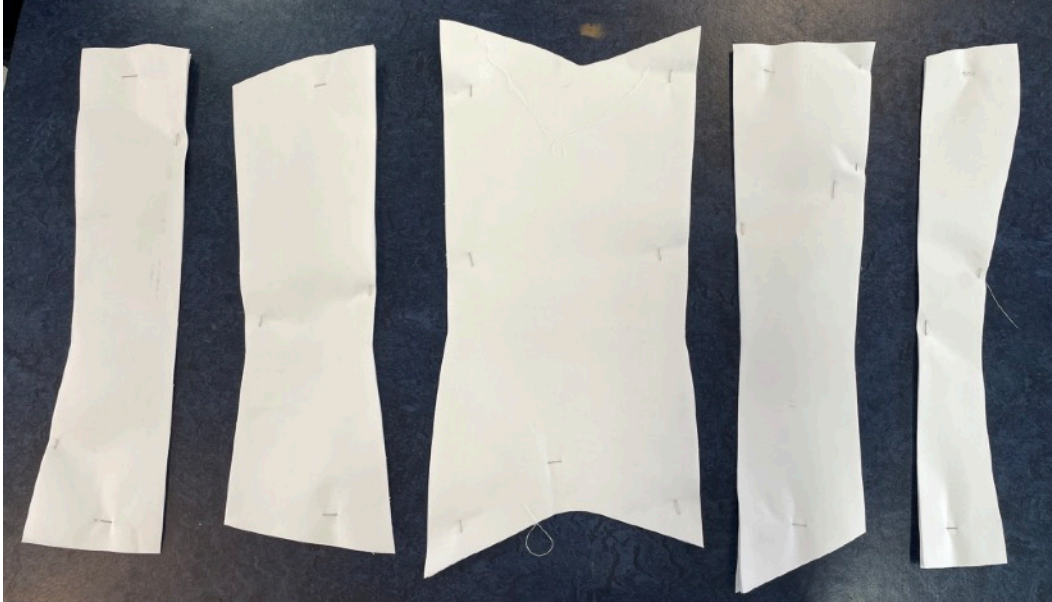


Claire's Pattern

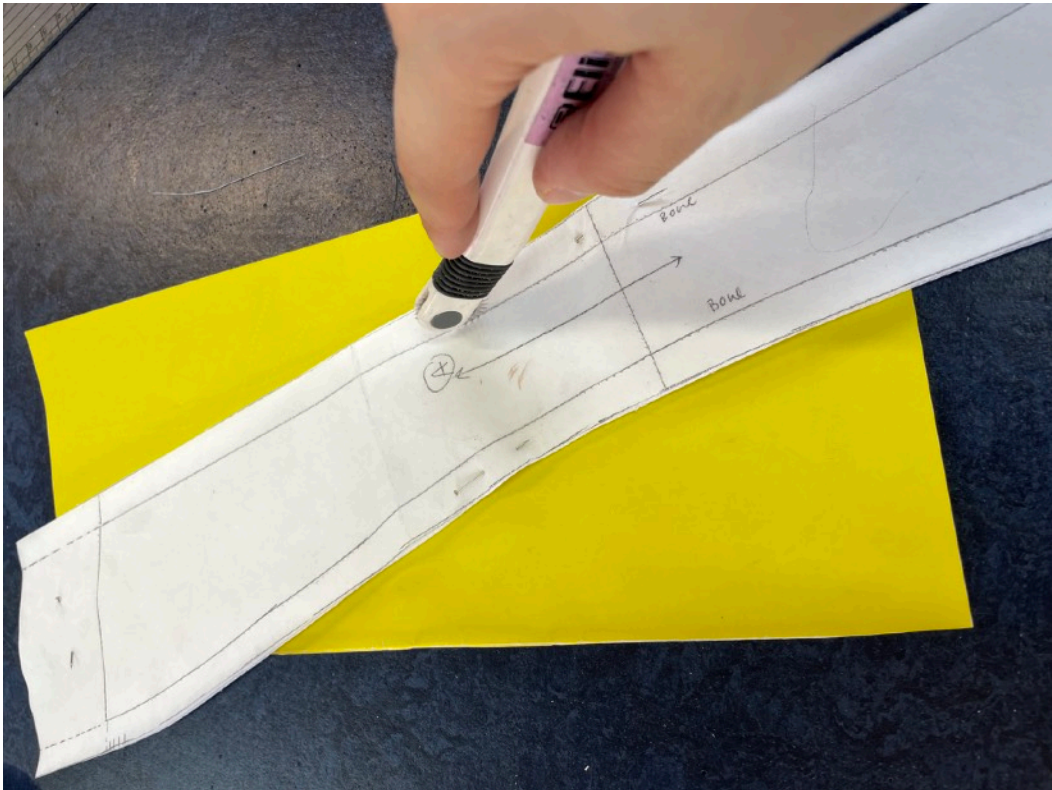
## Step Two: Transfer Pattern to Fabric



1. Pin : Pin the paper patterns to the top fabric, muslin, and coutil



2. Cut: Cut out each piece from each type of fabric



3. Trace : Before unpinning the fabric use a tracing wheel to transfer marking lines on to the fabric using transfer paper.

### Step Three : Tack

1. Tack the muslin and final fabric together : Tack the top, bottom, sides and the waist line.
2. Tack the coutil fabric : Tack the top, bottom and waist line.



### Step Four : Sew DE together then AB together

1. Sew D to E : Sew muslin and final fabric DE together and coutil DE together.
2. Sew A to B : Sew muslin and final fabric AB together and coutil AB together.
3. Press middle seam open. (Do not clip or trim anything!)

### Step Five : Sew the back DE

1. Put DE right sides together .
2. Pin down the middle seam.
3. Pin down the center back.
4. Sew down the center back.
5. Flip and use the metal bone to make seam flat and press it.
6. Sew closely to the edge of the center back.



7. Press the seam flat.
8. Sew down the middle seam doing a sink stitch.

**Step Six : Sew the front AB**

1. Pin down the middle seam front side to front side.
2. Pin down center front.
3. Sew down the center front.



4. Trim the center front seam to 1/2.



5. Flip over press open center front seam and sew closely to the center front.



**Step Seven : Add the busk and secure**

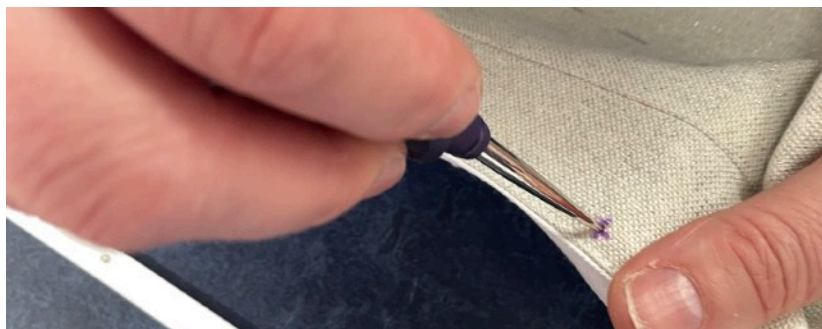
1. Holes on left, loops on right.

**For the Holes**

1. Mark where the waist will be on the busk.
2. Place the busk slinging waist mark with waistline on fabric, then mark the bottom hole.



3. Then mark a dot on the top hole and mark the holes between.
4. Use an awl to poke holes through the top fabric and muslin.

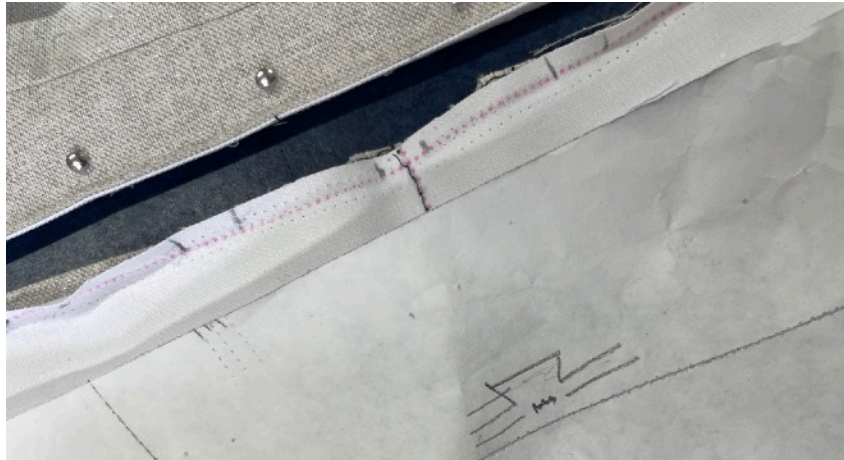


5. Push buttons through hole.



### For the loop

1. Before step four 3. Align the busk and draw marks where the loops are.



2. When sewing four 3 skip the places where the loops are marked.
3. Sew it twice to reinforce the stitch.



4. Then push loops through the gap.
5. Then sew the side seam up to the end of the loop busk on both sides.



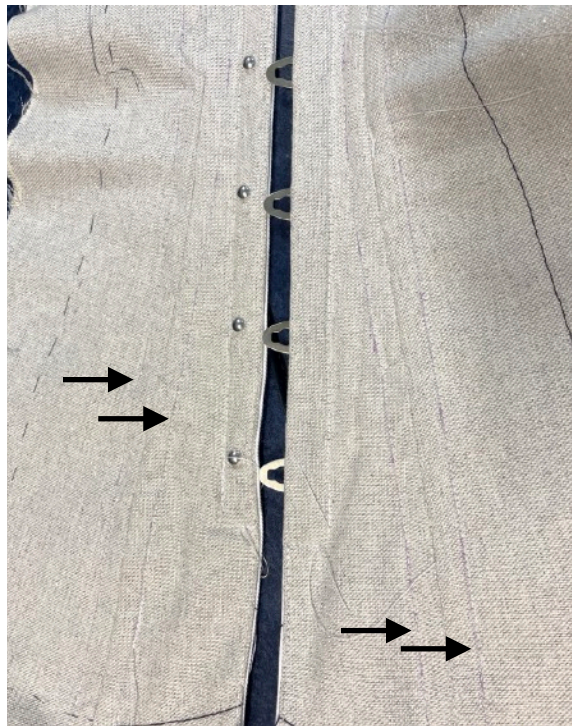
### Secure

1. Use a zipper foot to sew around the edges to secure



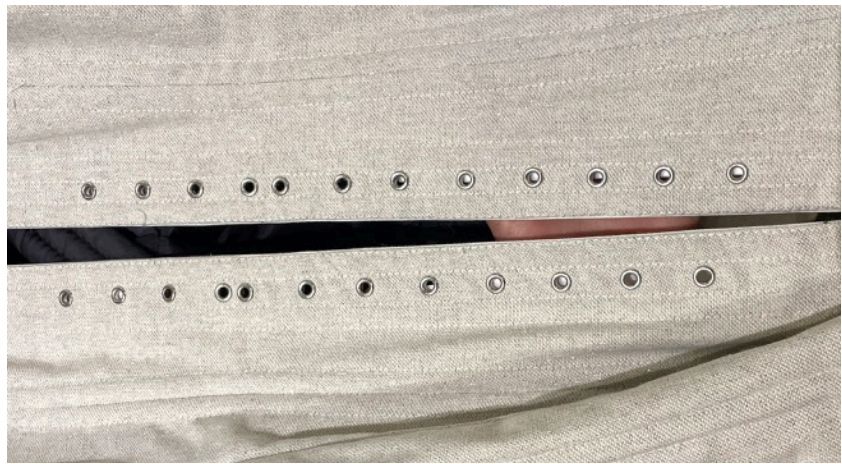
### Add Channels

1. Sew 0.9 cm wide channels on each side of a sewn seam.
2. On the center back sew a 0.9 cm then 1cm channel where the grommets will go then sew a 0.9 cm channel.



### Add Grommets

1. Find the waist line mark and pin 0.5 cm on each side of the waist.
2. Mark dots up and down 2.5 cm apart.
3. Punch holes through each marked dot. Difficult to do.
4. When insert grommets with the washer bulge facing the fabric. Press the grommets together, boy of the claim on top and girl on the bottom.



### Make and insert boning

1. Bend plastic boning in half and sew it together.
2. Insert metal bonding in the channels on each side of the eyelet.
3. Insert the plastic boning in the rest of the channels.
4. Remember to burn the edges of the plastic and insert the boning form the bottom.





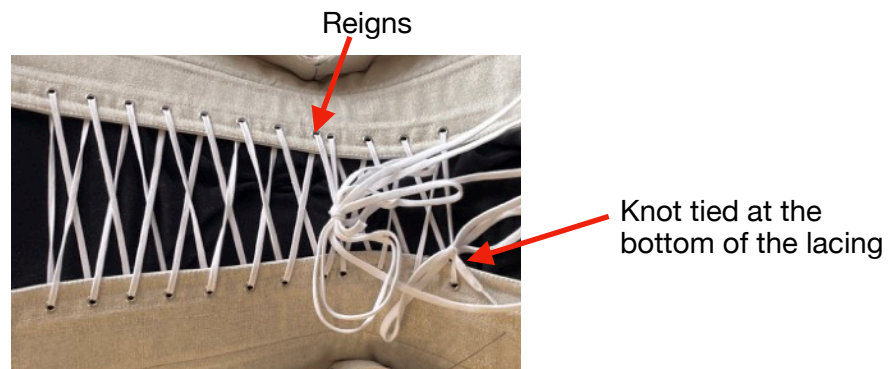
### Prepare for fitting

1. Connect all separate panels, sew together the coutil.
2. Tack the top fabric to the coutil.



### Lacing

1. Start from the top insert lacing under through each hole. Cross and insert from the back.
2. When you get to the two holes near each other lace from the bottom for the first hole but over on the second hole.
3. Continue down lacing under through each hole.
4. Tie a bowtie knot at the end. Lace loosely.



### Fitting

1. Ties up the corset by holding the reins first and pulling the lacing tight.
2. When lacing try to keep the cent front straight. Tie the reins together to finish.
3. The space between the center backs should look like a Y, that means it is fit correctly. The side seams should not be wrapped.
4. Based on that I had to let my middle panel seams out by 1cm on the top and 2.5 cm on the bottom. Only on the C panel!
5. Transfer changed onto muslin and top fabric.



Side panel is not warped - good , front boning in straight - good , back lacing is hourglass shape not good

**Revision - 1 cm wider at the top and 2.5 cm wider at the bottom on c panel only**



Side is still good, the back is better after revision as it looks even more like a v shape

### Connecting Each Panel with Nice Seams

1. Sew together top fabric and muslin, Right sides together.
2. Trim each seam to roughly 1cm thick and press open.
3. The top fold of coutil that will cover the top fabric seam should be folded towards the back.
4. Trim the under coutil so it fits over the top fabric seam but is not too long and tack that to the tip fabric.
5. Fold over the other fabric slightly over the seam and pin.
6. Flip over and do a stitch in the ditch and make sure to catch the coutil.



## Find the Top and Bottom Edge

1. Try on the corset.
2. Pull the boning down and fold over the top of the corset to your desired shape.
3. Mark it with chalk, also mark the bottom shape with chalk.
4. Only do half side, I used the roller and transfer paper to transfer the lines to each side.



## Prepare the top and bottom of the corset

1. Draw 1 cm above the marked line, on the top and bottom.
2. Tack on that line.
3. Pull the boning to 0.5 cm below your top marked line.
4. Cut the top of your fabric on the 1cm line.
5. For the bottom edge cut along the 1 cm line and cut through the boning.
6. Pull out the boning out and mark 1.5 cm, cut that off.



### **Reflection**

This class was informative, and I enjoyed going through all the steps at our own pace. My favorite part was when we started to finish the seams of the corset, and everything was coming together. Pinning, tacking, and doing all the measuring was the hard part. Especially the pinning was really difficult through the coutil. Pinning slowly was the best while using the cap of my pin box to help. The grommets were the worst part. I could not cut through the fabric at all! But I did it in the end, next time I would like to use a larger machine. I am super excited to have this skill set and will defiantly use it in my future projects.